

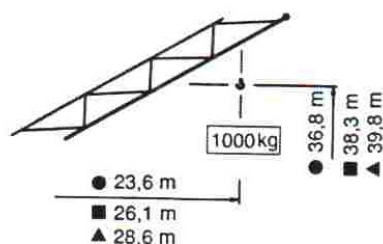
**Greitai sumontuojamas
bokštinis kranas
SMK 205/1**

AB „Šiaulių kranai“
ĮK 144657415, PVM LT446574113
Dvaro g. 162 A, LT-76197 Šiauliai
tel. (8 41) 453 595,
faks. (8 41) 452 550
el. paštas info@siauliu-kranai.lt

www.siauliu-kranai.lt

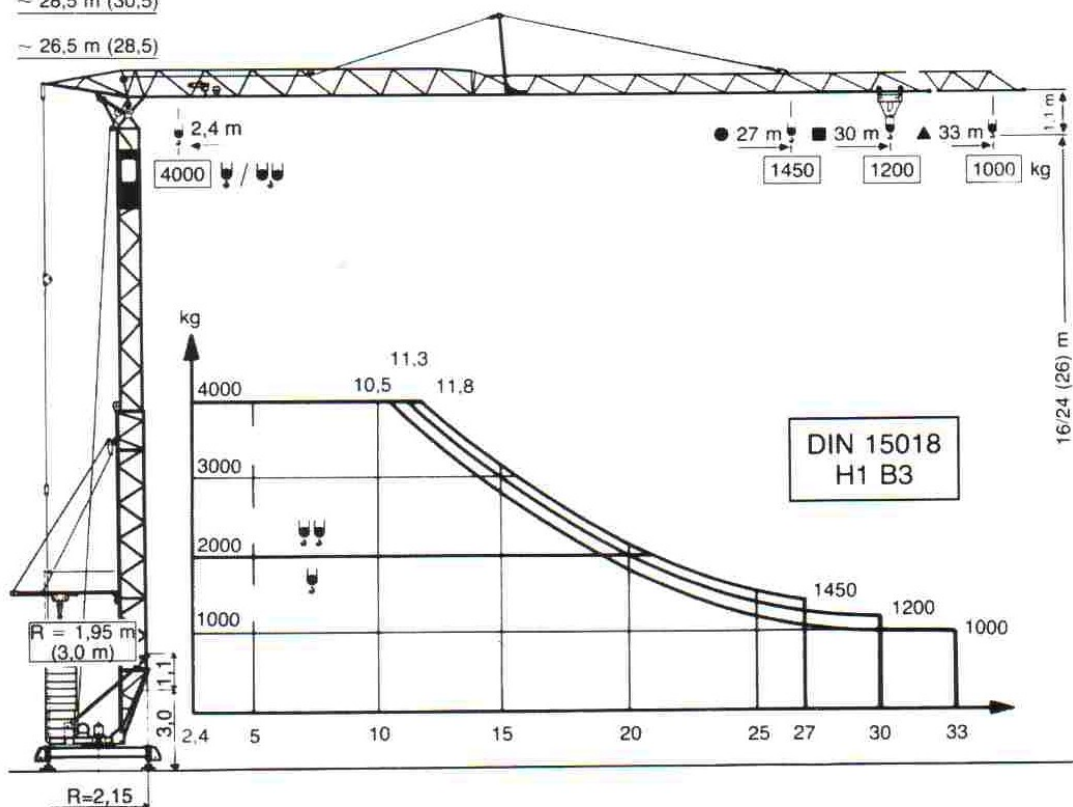
Techninės galimybės

Maksimali keliamoji galia 4,0 t
Maksimalus siekis 33 m
Maksimalus keliamosios galios momentas 473 kNm
Maksimalus galimas kablo pakėlimo aukštis 39,8m



~ 28,5 m (30,5)

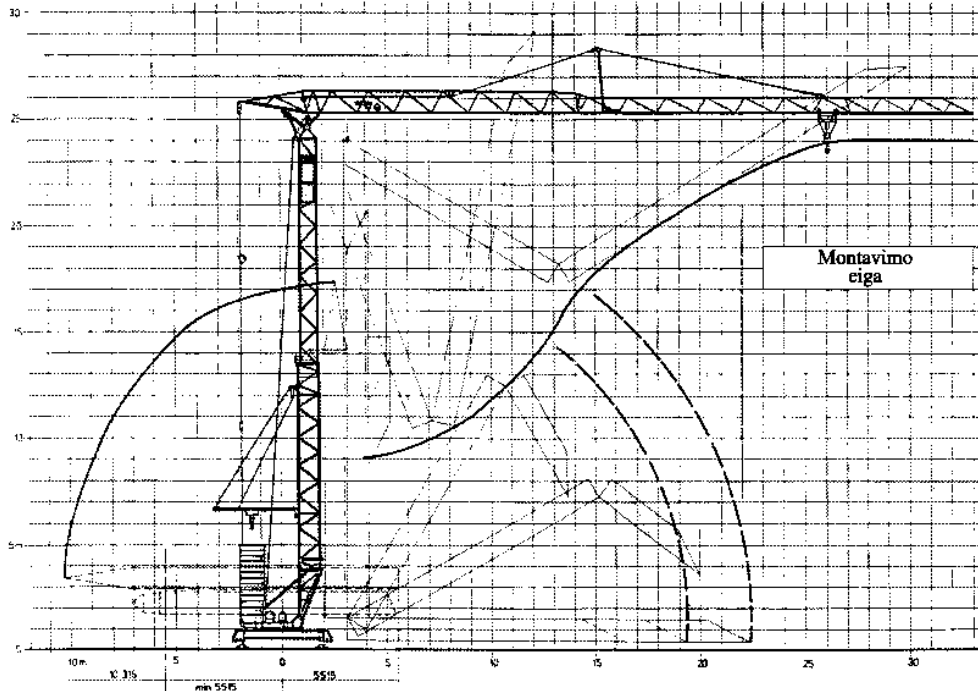
~ 26,5 m (28,5)




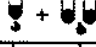




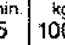
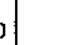
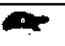

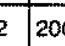




PEINER pranašumai

„Miesto“ tipo kranas PEINER SMK 205/1 yra tinkamas ankštoms statybų aikštelėms, kotedžų ir individualių namų statyboms, pastatų restauravimo darbams senamiestyje ir t.t. Posūkio spindulys siekia tik 1,95 m, o visas užimamos vietos plotas yra 4x4 m.

Montavimo schema



Greičiai

Tipas		 + 					Variklio galingumas
							
PU11/4							11
KS 2 / 4		$v = 20/40 \text{ m/min.}$ (kampu $v = 20/40 \text{ m/min} \times 1000\text{kg}$)					3,0
FT1 / 40		$v = 25 \text{ m/min.}$					3,0
DIEO / 55		$n = 0 \rightarrow 0,9 \text{ min}^{-1}$					3,0
380 V/50 Hz / 3 Ph		elektros įvadas					~ 22 KW

Transportavimo matmenys

